



新值机械

innovation create value



吨袋手动拆包站

Big-bag
Discharge
Station

目 录

CONTENTS

01	吨袋手动拆包站介绍 INTRODUCTION	----- 2
02	吨袋手动拆包站工作原理 PROCESS	----- 3
03	吨袋手动拆包站选项配置 OPTIONS	----- 4-7
04	应用行业及工程案例 PROJECTS	----- 8

吨袋手动拆包站介绍

INTRODUCTION

新值机械的吨袋手动拆包站通过电动葫芦或者叉车将吨包袋提升到进料口，人工将吨包袋下料口拆开后，打开附带的振动下料装置促使包袋内的物料通过自重落入下方料斗中。

该系统不仅有效保护了生产环境、减轻了劳动者的工作强度，同时还提高了生产效率，解决了大袋在开袋过程中的因吸潮导致结块、不易出料的现象。

NVM's big bag discharge station, lifts the big bag packaging materials to the feeding hopper through electric hoist, then manually opening blanking port, open the the attached vibrating blanking device to make powder or granular materials fall into the hopper through their own weight.

It not only effectively protects the production environment and reduces the work intensity of workers, but also improves the production efficiency and solves the problem of caking and difficult discharge caused by moisture absorption in the process of opening bags.

拆包站特点:

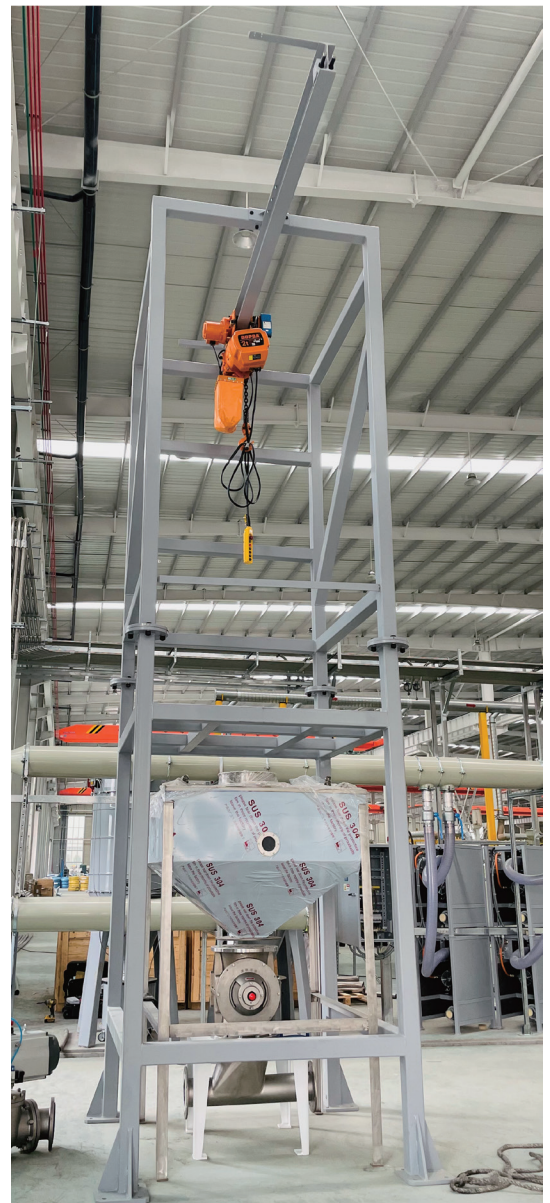
Features:

- 开袋站结构简单，便于操作；
- 用电葫芦或者叉车很容易将吨包输送至拆包工位上；
- 取料方便，物料在密闭的空间中流动，无粉尘泄露；
- 拍打装置帮助物料从吨包中流出，振动装置用于破除可能的架桥，下料完全，残留量少；
- 可以少量多次取用物料，也可作为存储料仓使用；
- 可以配合实现体积式计量和重量式计量；
- 可以按照防爆要求制作。

注：特殊规格产品可以根据客户需求定制

- The bag opening station is simple in structure and easy to operate;
- It is easy to transport ton bags to unpacking station by electric hoist or forklift;
- It is convenient to take materials, and the materials flow in closed space without dust leakage;
- Beat device helps materials flow out of ton bag, and vibration device is used to break the arch bridge, complete blanking and less residue;
- It can be used in a small amount of materials for many times, or as a storage bin;
- It can realize Volumetric and gravimetric dosing;
- It can be made according to explosion-proof requirements.

Note: Special specifications can be customized according to customer needs



➤ 项目现场照片
On site picture

吨袋手动拆包站工作原理

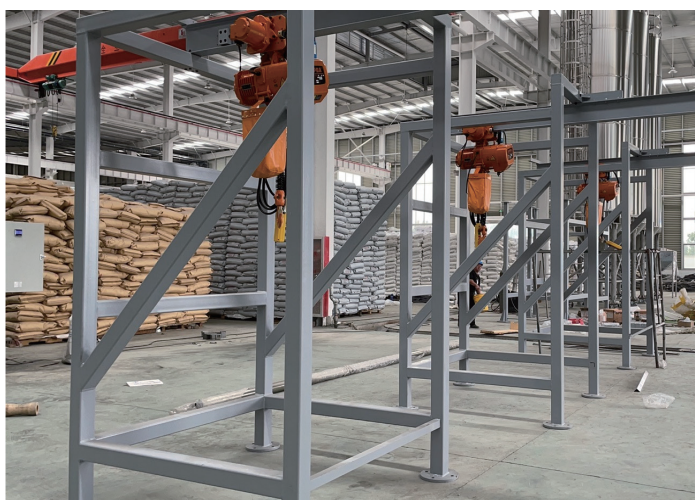
PROCESS

本系统由起吊装置、设备支架、拍打装置、开袋装置、缓存料仓、气动控制器等及辅助连接部分的设备元件共同组成。

与物料接触部分可采用316L不锈钢、304不锈钢，支架采用304不锈钢/Q235碳钢，表面亚光，设备底脚（四只）采用不锈钢板打孔，用膨胀螺栓固定于地面。

This station is composed of lifting device, equipment support, bag beating device, Bag opening device, buffer bin, and etc., pneumatic controller and equipment components of auxiliary connecting parts.

316L and 304 stainless steel can be used for the part in contact with materials, and 304 stainless steel / Q235 carbon steel can be used for the support, and with matte surface, the four feet adopt stainless steel plate perforated and fixed on the ground with expansion bolts.



📍 项目现场照片
On site picture

工作流程:

Work Process:

- 将电动葫芦降下，将包装袋的袋绳挂在刚性支架上;
- 操作控制葫芦升降和行走，沿着行走导轨运行到卸料区上方落下，将包装袋下降操作箱位置;
- 开袋装置有人工解袋手套箱（吨包袋可回收），拆包后物料在重力的作用下开始卸料到缓存料仓中，拍袋机构反复拍打包袋使物料快速顺利的下落，保证吨袋内不会残留;
- 卸料完毕，电动葫芦升起，吊出空袋。
- Lower the electric hoist and hang the bag rope on the steel support;
- Operate the hoist to lift and walk, run along the walking guide rail to the unloading area, and lower the bag to the position of the operation box;
- The bag opening device is equipped with a manual unpacking box (bags can be recycled). After opening, the materials begin to fall into the buffer bin under the action of gravity. The Bag beating mechanism repeatedly beats the packaging bag to make the materials fall quickly and smoothly, so as to ensure that there is no residue in the bag;
- After unloading, the electric hoist raise and lift out the empty bag.

吨袋手动拆包站选项配置

OPTIONS



名称：电动葫芦

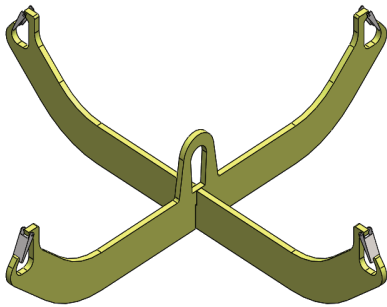
Equipment Unit: Electric hoist

描述：电动起重设备，配合吊具将吨袋吊起

Description: Electric lifting equipment, cooperate with spreader to lift ton bags

应用：降低劳动力，提高效率

Application: Reduce labor force and improve efficiency



名称：吊具

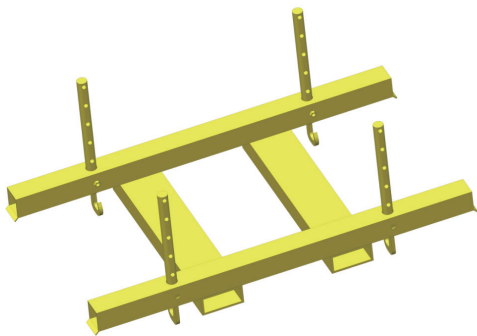
Equipment Unit: Spreader

描述：钢性支架，配合电动葫芦将吨袋吊起

Description: steel holder, cooperate with electric hoist to lift ton bag

应用：起吊装置为电动葫芦的时候

Application: Can be selected when the lifting device is an electric hoist



名称：吊具

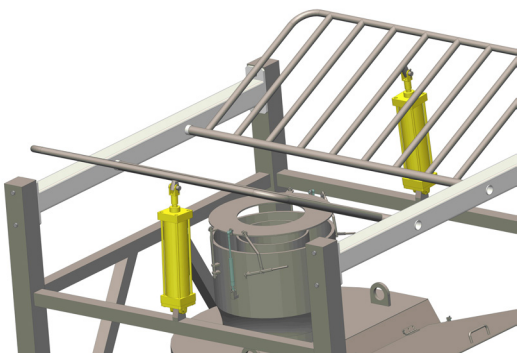
Equipment Unit: Spreader

描述：钢性框架，配合叉车将吨袋吊起

Description: Steel frame, cooperate with forklift to lift ton bags

应用：厂房自配有叉车的时候

Application: When the plant is equipped with forklift



名称：助推拍打气缸

Equipment Unit: Pneumatic vibrator

描述：帮助吨袋内物料快速下落，防止物料在吨袋内堆积。

Description: Help the materials fall quickly and prevent the materials accumulation.

应用：当物料流动性差的时候

Application: The fluidity of material is poor



名称：防尘解袋室

Equipment Unit: Dustproof bag opening device

描述：手动操作夹袋装置，通过快开门在内部解袋。

Description: Manually operate bag clamping device and release the bag inside through the quick opening door.

应用：用于含粉尘类物料，防止解袋时粉尘飞扬
Application: Used for materials containing powder, to prevent dust flying when releasing



名称：脉冲除尘器

Equipment Unit: Pulse dust collector

描述：防止料箱内的粉尘外溢，有利于物料落料

Description: Prevent the dust from overflowing and is Conducive to material falling

应用：通常适用于粉料或者含粉量较高物料

Application: Usually suitable for powder or materials with high powder contentg



名称：缓存料箱

Equipment Unit: Storage hopper

描述：用于暂时存储已拆包物料

Description: Used to temporarily store unpacked materials

应用：更换包袋间隙，实现物料连续不间断输送
Application: Replace the bag gap, ensure the contin-



名称：低料位报警器

Equipment Unit: Low level alarm

描述：在缓存料箱内物料处于低位时，输出报警提示

Description: When the material in the storage is low, gives an alarm prompt

应用：确保物料连续不间断输送

Application: Ensure continuous conveying of materials



名称：助流气碟

Equipment Unit: Flow aid air disc

描述：防止物料在缓存料箱锥体位置堆积架桥

Description: Prevent materials from accumulating and bridging at the cone of the storage bin

应用：用于流动性差的粉料、破碎料等

Application: Used for powder and broken materials with poor fluidity of materials



名称：振动气锤

Equipment Unit: Vibrating air hammer

描述：防止物料在缓存料箱锥体位置堆积架桥

Description: Prevent materials from accumulating and bridging at the cone of the storage bin

应用：用于流动性差的粉料、破碎料等

Application: Used for powder and broken materials with poor fluidity



名称：插板阀

Equipment Unit: Gate valve

描述：用于缓存料箱底部，阀门关上则可阻断物料下落

Description: It is used at the bottom of the storage hopper. Closing the valve can block the falling of materials

应用：在设备维护时使用

Application: Used in equipment maintenance



名称：手动开关阀

Equipment Unit: Manual on-off valve

描述：用于缓存料箱底部，阀门关上则可阻断物料下落

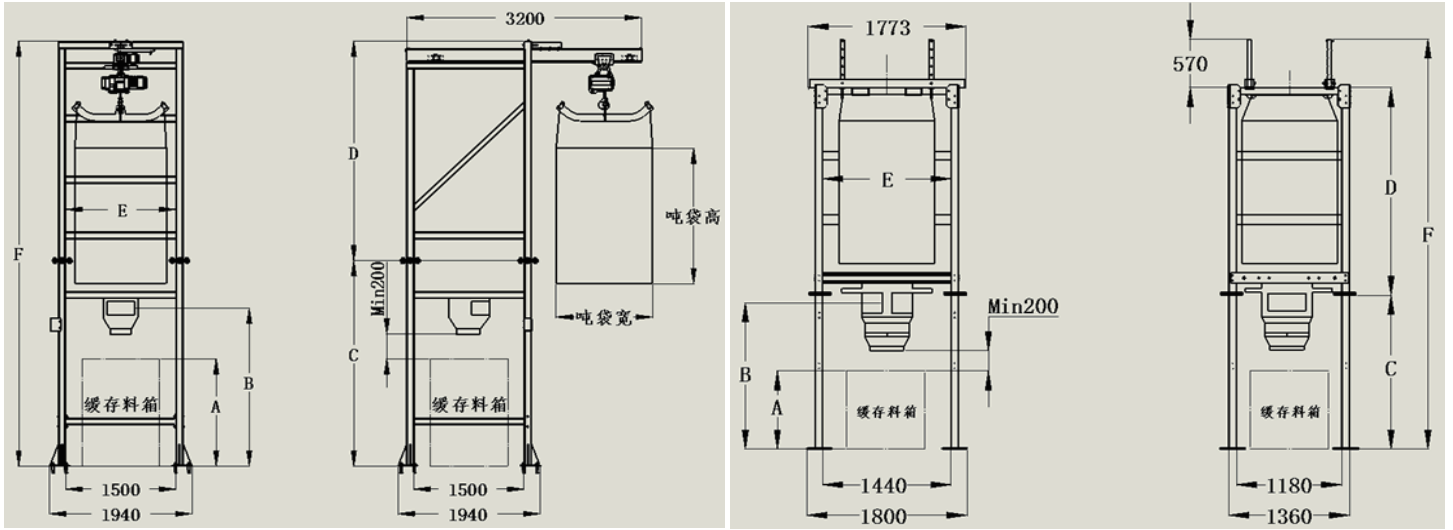
Description: It is used at the bottom of the storage hopper. Closing the valve can block the falling of materials

应用：在设备维护时使用

Application: Used in equipment maintenance

外形尺寸图:

Dimensions:



电葫芦装载型
Electric hoist loading type

叉车装载型
Forklift loading type

吨袋手动拆包站尺寸(DIMENSIONS)						袋尺寸 Bag dimensions		总消耗 Total consumption		重量 Weight		
缓存料箱 Process equipment "A"	防尘解袋室 Access door "B"	下部支架 Bottom structure "C"	上部支架 Bulk bag structure "D"	支架宽度 Bulk bag structure inside width "E"	总高度 Overall height "F"	最大 宽度 Max width	最大 高度 Max height	空气 AIR	功耗 Elect.	总计 Total	支腿 Each leg	
mm	mm	mm	mm	mm	mm	mm	mm	CFM	PSI	HP	KG	KG
800	1500	2000	2400	1300	4800	1219	1651	-	-	0.13	1650	450
800	1600	2100	2400	1300	4900	1219	1651	1	80	0.13	1890	510
800	1800	2200	2600	1400	5000	1219	1651	2	80	0.13	1950	510
800	1900	2400	2600	1400	5400	1219	1651	6	80	0.13	2400	550
800	2000	2600	2800	1500	5800	1219	1651	-	-	2.13	2800	680
800	2200	2900	2800	1500	5900	1219	1651	2	80	4.13	2950	720
800	2400	3000	3000	1500	6000	1219	1651	6	80	4.13	3150	750

注: 黄色 (缓存料箱) 表示尺寸可定制。
橙色 (空气) 表示除尘参数根据输送料决定。

Notes: Yellow part (storage bin) indicates that the size can be customized.

Orange part (air) indicates the dust removal parameters are determined according to material conveyed.

应用行业及工程案例

PROJECTS

吨袋手动拆包站用于粉粒状物料吨袋拆包卸料作业，在化工、塑料、橡胶、医药、食品等行业使用，对大袋（吨袋）如塑料树脂、炭黑和食品添加剂等干燥的粉粒状物料进行拆包作业。

Big-bag discharge station is used for big bag unpacking and unloading of powder and granular materials. It is used in chemical, plastic, rubber, medicine, food and other industries to unpack big bags (ton bags) of dry powder and granular materials such as plastic resin, carbon black and food additives.

工程案例： Projects:



山东项目现场照片
On site picture



上海项目现场照片
On site picture

苏州新值机械有限公司

SUZHOU NEW VALUE MACHINERY CO.,LTD


技术和销售办公室：苏州市工业园区展业路18号中新生态科技城B幢
Technical & Sales Office: Building B, Zhongxin ecological science and Technology City, No.18, zhanye Road, Suzhou Industrial Park.

测试中心和工厂厂房：常州市金坛区盐港东路39号12幢6号

Factory & Testing Centre : No. 6, Building 12, No. 39, Yangang East Road, Jintan District, Changzhou

 www.newvaluemachinery.com

 info@newvaluemachinery.com

 0512 - 6572 9632

 隋先生Mr. Sui 罗女士 Ms. Luo

 18151587190 18151587182



网站二维码
Website QR code